

SRJ Carpentry

Bath Local Skilled Carpenter



**For all of your Carpentry Requirements,
provided with a Professional and Friendly Service.**



business-directory.org.uk

Welcome to S.R.J Carpentry

I am a company working in Bath and all surrounding areas. With over 17 years experience and CITB qualified, I offer all aspects of carpentry and joinery, and project manage jobs.

I employ a conscientious attitude at all times and therefore take pride in my work and your home.

I am very open minded to your ideas and designs, and along with my experience I will help you to achieve what you desire.

Please use this magazine & my website to get an idea of the type of work I have recently undertaken.

Any questions or queries please do not hesitate to contact me.

Thank you

Simon Jones.



Gallery

These images will show you some of the tasks I have undertaken. But by no means do they cover all, they are just informative. Varying from smaller tasks to larger ones, they are displayed in the following order.

- **Doors, Windows & Staircases**
- **Enquire for more services.**



Windows & Doors 1



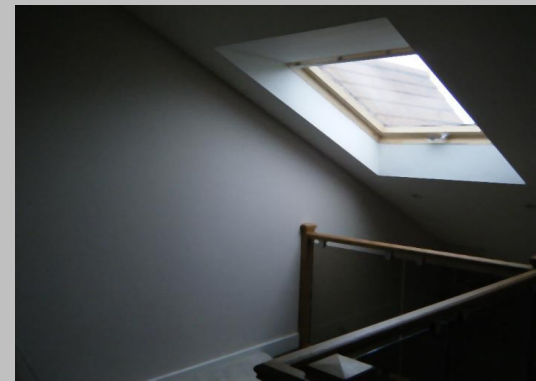
Windows & Doors 2



Windows & Doors 3



Full windows installation



Windows, Doors & Staircases 4



**Replacement spindles
before and after removing
Hardboard panelling.**



Windows & Doors 5



**Rotted basement window frame
New frame assembled with air
vent. Frame installed ready for
decorating.**



Windows & Doors 6



Oak Mirrored Doors

Windows & Doors 7



All new joinery to suit existing and decorated to finish

Windows, Doors & Staircases 8



Replacement handrails and spindles. Before and after .

Windows & Doors 9



Replacement box sash windows, double glazed with full draught proofing.

Windows & Doors 10



Double doors and glazed

Windows & Doors 11



New Accoya garage double doors, ready for decoration

Windows & Doors 12

Inside view



Roof view



Replacement, bespoke timber framed sky light. Glazed and decorated!

Windows & Doors 13



New door and frames

Windows & Doors 14

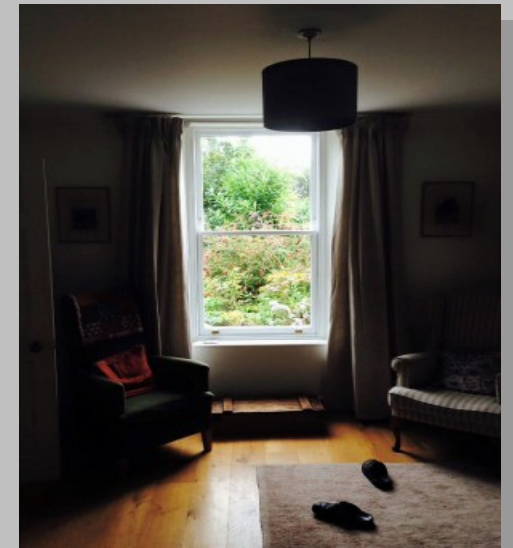


Replacement windows and front door and frame. Ten windows in total, box sash's and casements All supplied by Windsor Joinery

More next page



Windows & Doors 14 (2)

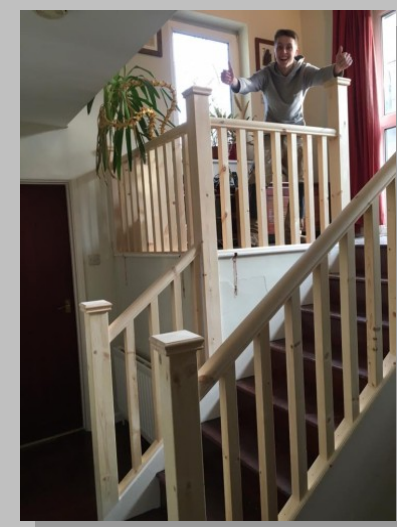
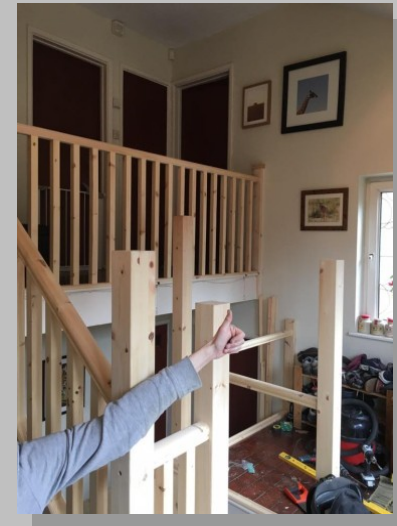


Windows & Doors 15



Three upstairs Hardwood Windows supply by Windsor joinery. Finished with a decorative arch ready for decoration.

Windows, Doors & Staircases 16



Old handrails replaced with new newel posts, rails and spindles, making it safe for this young family!

Windows, Doors & Staircases 17

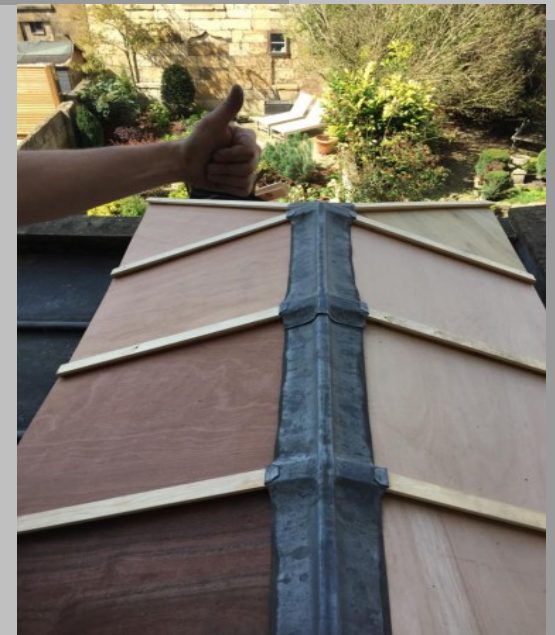


Replacement newels, caps, base plates, rails and spindles.

Windows, Doors & Staircases 18



**Replacement timber rafters and new double glazed and stepped units.
Remove rotten timbers and replaced, templates made, ready to return once the glass is ready.**



Windows, Doors & Staircases 19



Replaced old up and over garage door with solid Sapele frame and barn doors.

Windows, Doors & Staircases 20



Transformed hallway. new doors through out property, new hand/base rails and spindles throughout.

Windows, Doors & Staircases 21



Replacement solid Oak porch door and side light. Supplied by Windsor Joinery.

Windows, Doors & Staircases 22



Sliding timber external doors. Complete to a finish.

Windows, Doors & Staircases 23



Windsor Joinery new hardwood frame and stable door. Complete with the customers hand made stained glass.

Windows, Doors & Staircases 24

22 slim line double glazed sash windows throughout this property in Bath.



Supplied by Windsor Joinery, flawless sprayed finished, fitted with supplied ironmongery.

Windows, Doors & Staircases 25



Radius head slim line double glazed sash windows. Installed to suit existing sash boxes. Replacement hardwood sills where required.

Windows, Doors & Staircases 26



Hardwood replacement office door. This was a big boy 2800x1200mm, made by Windsor Joinery.

Windows, Doors & Staircases 27



Solid Ash stair alterations. New wrap around ash bottom supported tread, extended and new newel posts. New spindles. All to match existing and ready for oiling.

Windows, Doors & Staircases 27 Continued



Solid Ash stair alterations. New wrap around ash bottom supported tread, extended and new newel posts. New spindles. All to match existing and ready for oiling.

Windows, Doors & Staircases 28



Traditional box sash windows. Much better than the existing aluminium we replaced. All complete to a sprayed finished.

Windows, Doors & Staircases 29



Replaced the handrail and spindles.

Windows, Doors & Staircases 30



Hardwood replacement front door and frame. All ready for the decoration.

Windows, Doors & Staircases 31



Nine internal doors and 1 porch door, all new ironmongery, stops and porch side light glazing.

Windows, Doors & Staircases 32



Nice way to end the week. Removed x3 Aluminium windows and boxes. Replaced with new timber box sashes x3 pair. Slim line double glazed, springs, draught proofed staff and parting beads and all required ironmongery. Installed with a pre finished sprayed white satin finish.

Windows, Doors & Staircases 33



Replacement casement windows top and bottom bay. Removed old uPVC replaced with the supplied Jeld-wen hi build stormsure casements, along with our own supplied tower scaffold for access sealants and pointing in.

Windows, Doors & Staircases 34



Hallway complete. All new oak doors X7 and ironmongery with replacement hardboard stair spindles with glazed panels and chrome clamps.

Windows, Doors & Staircases 35



Traditional hung single glazed box sash windows and weights. Supplied by Windsor Joinery. Front and back second floor replacement boxes and sashes.

Windows, Doors & Staircases 36



Replacement front door and frame made to suit. Double glazed units to both door and fan light. All ready for decoration.

Windows, Doors & Staircases 37



**Purpose built tulip wedding doors. Made to suit by Windsor Joinery and install by.... SRJ.
Doors, two part architrave both sides of the frame and stops, all in a day's works.
All ready for decorators to complete.**

Windows, Doors & Staircases 38



What a great week to be installing these sash windows. Replacement sash windows, existing boxes, new slim line double glazed units, draught proofed parting and staff beading. All to a flawless sprayed finish by Fine mode decorating.

Windows, Doors & Staircases 39



New hardwood front door and frame installed. Made and supplied by Windsor Joinery.

Windows, Doors & Staircases 40



Front door Friday... well installed yesterday. Windsor Joinery made Iroko front door and frame in the center of Bath. Ready for Matt to decorate next week.

Windows, Doors & Staircases 41



Double box dormer sashes. Removed and replaced with existing lead works and timber trimming within the same day. No hurricane Lorenzo stopping us.

Windows, Doors & Staircases 42



Replacement front door and canopy. Hardwood front door and frame, replacement front porch canopy lined with Flexi ply. All ready for the decoration and lead works.

Windows, Doors & Staircases 43



Removed and replaced existing stair stud-works. New softwood newel posts, half newels, base and handrails with square primed spindles. Exposed under stairs for storage and consumer housing. All installed to suit the existing stair case for a modern finish.

Windows, Doors & Staircases 44



Nice start to the week with these shutter doors. Made by Windsor Joinery. Top job as always. Pleasure to install, along with a new frame and all ironmongery. Also simple but effective window bench seat and reveal storage all ready for decoration.

Windows, Doors & Staircases 45



Perfect day/week to start fitting these arched top casements.

Windows, Doors & Staircases 46



New newel posts, oak hand and base rails with white square spindles, all decorated/oiled to a finish.

Windows, Doors & Staircases 47



Replacement Sapele hardwood porch area. All new timbers supplied by Windsor Joinery. Removed and replaced all existing and rotten timbers, door and match board below the wall plate. Keeping the roof details in situ as requested. Sealed, filled and sanded ready for decoration.

Windows, Doors & Staircases 48



Replacement hand, base and spindles all in solid oak. Plus x4 Geno oak internal doors transforming this landing and hallway in Bath. All ready for decoration and oiling.

Windows, Doors & Staircases 49



Replacement dormer box sash in the centre of Bath this morning. Made by Windsor Joinery to suit existing.

Windows, Doors & Staircases 50



Lily pad tiles.

Hardwood replacement front door, frame and side light. Removed internal porch door and frame, new porch storage and step detail. All complete with lily pad tiles.

New door frame and glazing supplied by a Windsor Joinery Bath.

Looking forward to seeing the decorated finish.

Windows, Doors & Staircases 51



**Replacement Edwardian hardwood front door and frame and new brass ironmongery.
All ready for decoration.**

Windows, Doors & Staircases 52



Replacement front door.

Windows, Doors & Staircases 53



Enjoyed installing these @howdensjoinery Holdenby pre finished and Dordogne internal doors. X20 doors installed over 3 days, transforming this hallway and house for a modern finish.

Windows, Doors & Staircases 54



Internal room divide.

Made to suit slimline crittal style finish. Slimline matching doors supplied by the customers. Safety glass supplied and installed on site. All filled sanded and sealed ready for decoration.

Windows, Doors & Staircases 55



Barn strap sliding door gear with howdens pre finished Holdenby oak internal door.

Windows, Doors & Staircases 57



New hatch opening with access ladder, lifted joists with 200mm insulation and board out.

Windows, Doors & Staircases 58



Removal of the existing disjointed match board timbers. Supplied and installed new Siberian larch tongue and groove V-joint cladding. Secured in situ to suit the existing garage frame. Simple works with a great material and modern finish.

Windows, Doors & Staircases 59



Solid Sapele timber replacement door and frame...

Windows, Doors & Staircases 60 & 61



Few more Sapele hardwood front doors, frames, glazing and ironmongery. Supplied by Windsor JoineryBath to finish the week off. Charles street in the centre of Bath and Weston lane Bath, all ready for decoration and I am sure a festive wreath.

Windows, Doors & Staircases 62



FRONT DOOR FRIDAY

.....

Late one tonight getting this one finished. Solid oak front door and frame, ironmongery direct uk for the brass/antique black ironmongery. And getting it delivered late into the day.

Windows, Doors & Staircases 63



Loft stairs - new newels, and stair joinery.

Landing / hallway - existing newels with replacement joinery.

Softwood hand and base rails to be oiled, primed square spindles to be decorated.

Windows, Doors & Staircases 64



Replacement newels, hand, base rails and spindles. All new supplied by ourselves from Howdens Joinery. Solid oak replacements installed to suit and ready for oiling.

Windows, Doors & Staircases 65



**Replacement box sash windows to this property on Henry street, Bath.
New hardwood single glazed traditional box sashes made to suit by Windsor Joinery Bath
and ready for the decoration to be completed.**

Windows, Doors & Staircases 66



Supplied and fitted, x3 pairs of replacement rebated pattern 70 external doors, frame and ironmongery. Glazed on site too... all over the last couple days.

S.R.J Carpentry.com



Proudly Serving The City Of Bath
And All Surrounding Areas



Dentons 2016

business-directory.org.uk

Dentons 2016

Pukka Bath
Welcome...



Thank you for taking the time to browse
my images.

